

Suggestions for solving transport issues

– prerequisite for further development
of tourism in the Tatras

Press conference, 27/07/2017

TMR – Central European leader in the field of tourism














TMR development in

2006

Mountain Resorts	Countries	Transport Facilities	B & R	Amusement Park	Water Park	Hotels	Employees	Turnover
								
2	1	8	3	0	0	0	120	

2016

Mountain Resorts	Countries	Transport Facilities	B & R	Amusement Park	Water Park	Hotels	Employees	Turnover	TM Shops	Rentals
										
3	3	61	26	1	1	9	1 095	80 mil. €	21	7

THE TATRAS – a precious natural territory as well as a top tourist destination in Slovakia = various goals must be reconciled



A year-long tradition of tourism and sport in Slovakia since 1909



Natural and cultural heritage

**What kind
of Tatras
do we
(really)
want?**





Survey **What kind of Tatras do we want?**

75% of respondents say:

The development of
the Tatras concerns **all Slovakia.**



Survey **What kind of Tatras do we want?**

What in your opinion are the biggest problems of tourism in the Tatras?

1. Prices of services
2. Transport and parking
3. Too many tourists
4. Offer and quality of catering
5. Lack of information



Survey **What kind of Tatras do we want?**

What should be developed in the Tatras in future?

1. Enough parking capacities
2. Cycle routes
3. Better transport quality (trains, roads)
4. Information service
5. New tourist trails



Survey **What kind of Tatras do we want?**

Which development wish **people under 30 years** for the Tatras?

1. Cycle routes
2. New tourist trails
3. Better transport quality (trains, roads)



Survey **What kind of Tatras do we want?**

Which development wish **people over 50 years** for the Tatras?

1. Enough parking capacities
2. Better transport quality (trains, roads)
3. Modern catering and accommodation facilities



Survey **What kind of Tatras do we want?**

Which development wish **people between 30 and 50 years** for the Tatras?

1. Cycle routes
2. Enough parking capacities
3. Better transport quality (trains, roads)

A scenic view of Štrbské Pleso lake. In the foreground, several wooden rowing boats are docked at a wooden pier. The water is calm and reflects the surrounding landscape. In the middle ground, a dense forest of evergreen trees surrounds a small wooden cabin. In the background, majestic mountains rise under a blue sky with scattered white clouds. The overall atmosphere is peaceful and natural.

Štrbské Pleso

Situation

- many accommodation facilities without a connection to the resort
- central car park and resort – transport by ski busses

Room for development

- adding blue ski pistes and transport capacities, i.e. improving the transport accessibility of the resort



ŠTRBSKÉ PLESO 1,377 m asl – 1,840 m asl

Current situation

Area of ski pistes = 22.6 ha

Transport capacity of transport facilities = 4,950 pers/h

LEGEND

-  Existing transport facilities
-  Existing ski pistes



ŠTRBSKÉ PLESO 1,377 m asl – 1,840 m asl

Suggestion



Parameters of suggested ski pistes

mkg.	length (m)	width (m)	area (ha)
01	1252	50	5.7
02	125	16	0.15
03	465	7	0.32
04	775	40	3.19
05	1350	50	5.72
06	322	11	0.41
07	745	50	3.62

Parameters of suggested cableways

mkg.	name	length (m)	transport capacity (pers/h)
LD1	CD5C TRIGAN	447	2400
LD2	CD6C HELIOS	1211	3000
LD3	GFR2-2-8 KEMPINSKY	458	330
LD4	CD6C ANDELOVA	640	2000
LD5	CD6C INTERSKI	1021	2400

LEGEND

-  Existing transport facilities
-  Existing ski pistes
-  Suggested new cableways
-  Suggested ski pistes
-  Suggested snow-making reservoirs





Tatranská Lomnica

Situation

- unsustainable transport situation mainly during the winter season
- a systematic solution required, especially as for parking

Room for development

- creating 2 departure points for better access to more ski pistes

Current parking areas

15 MGD T-Lomnica - Start

Car park of Buková hora

500 vehicles

60 vehicles

80 vehicles

250 vehicles

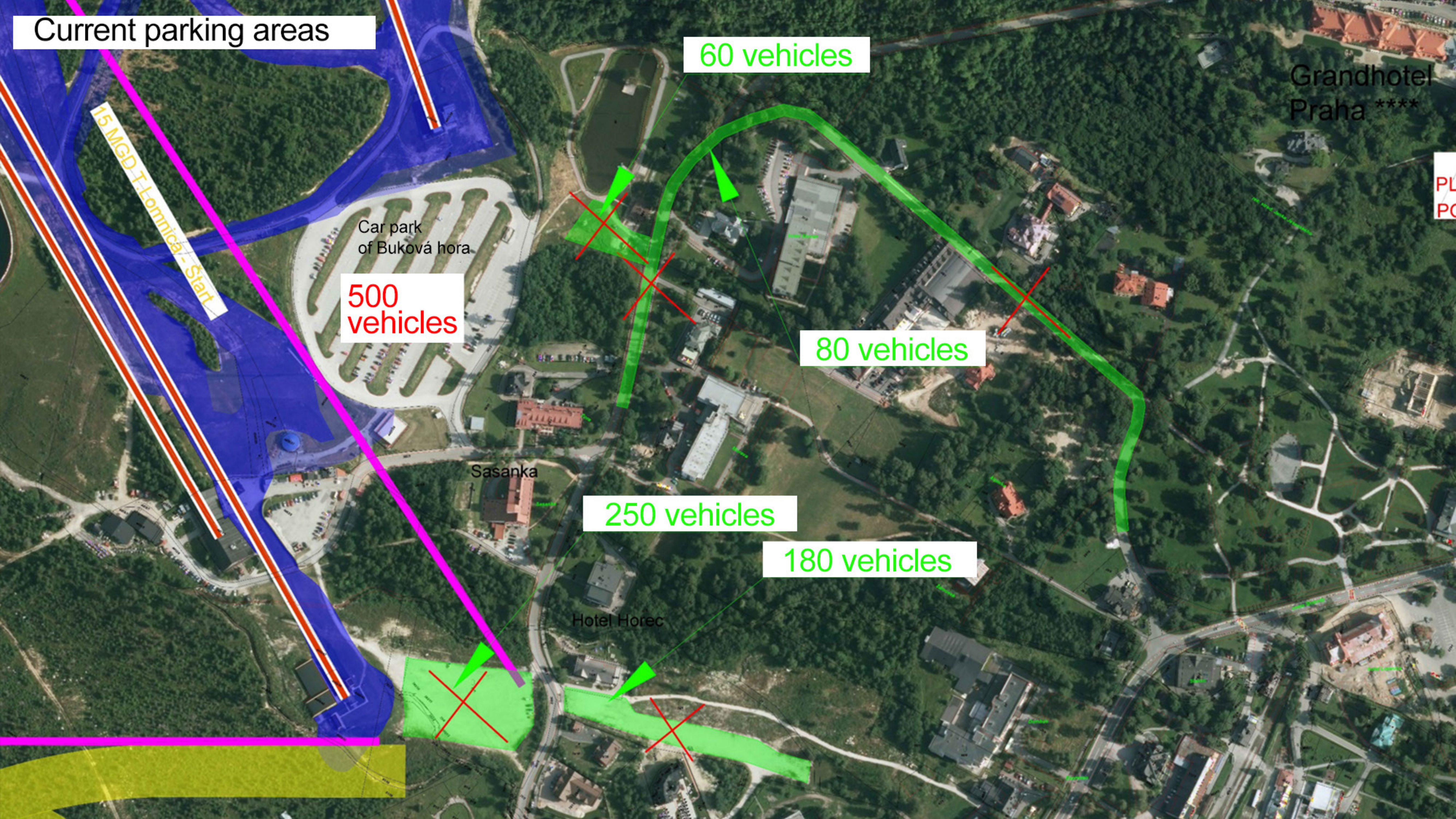
180 vehicles

Sasanka

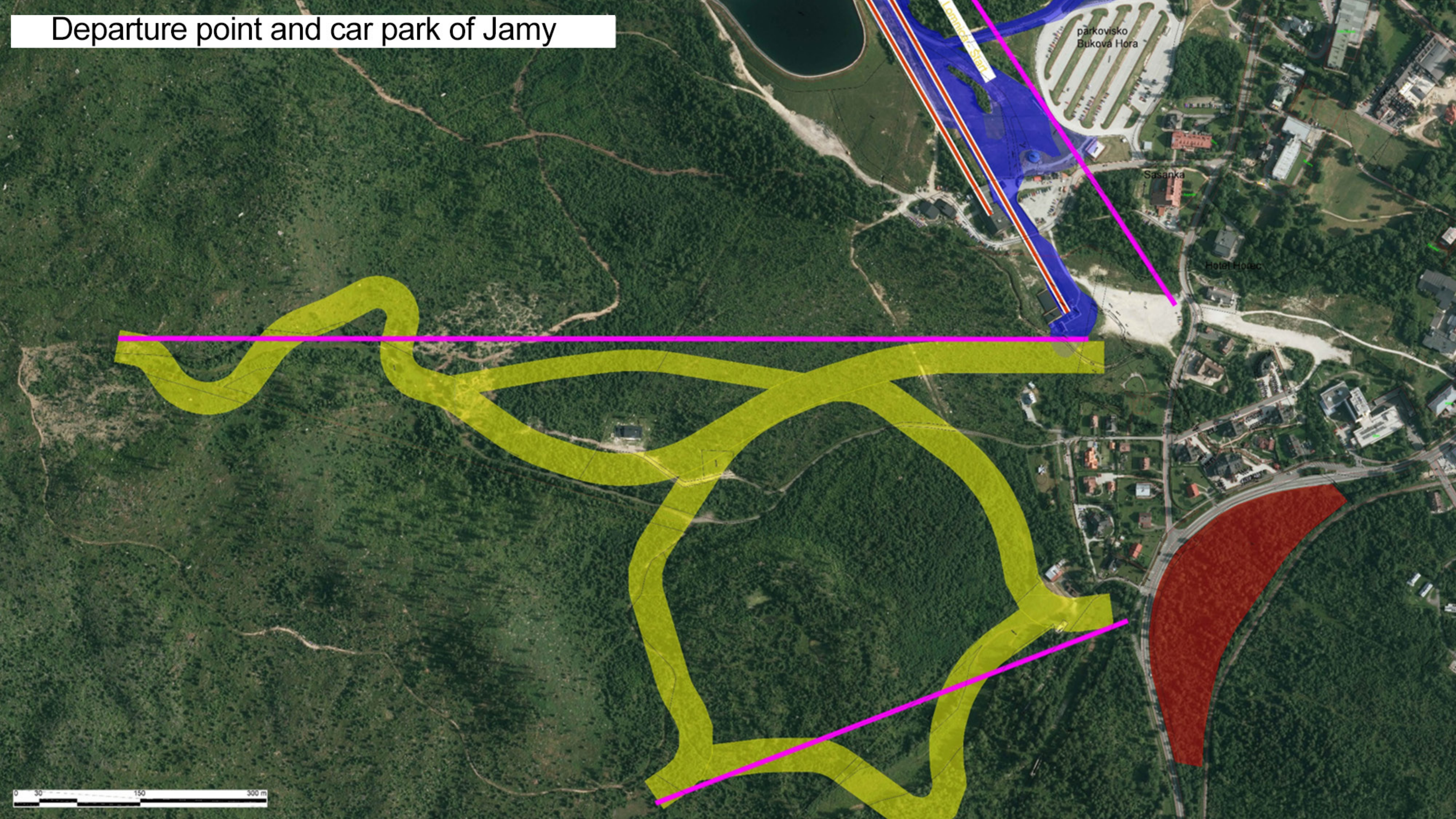
Hotel Horec

Grandhotel Praha ****

PL
PC



Departure point and car park of Jamy



parkoviško
Buková Hora

Sasanka

Hotel Hodec

Lomnice Štán

0 30 150 300 m

Smokovce



Room for development

- restoration of the skiing tradition (Jakubkova lúka, Hrebienok)
- development of services and skiing combined with renovation of decaying buildings (accommodation facilities, spa) in future

Limits of skiing development in Smokovce:

- the character of a separated resort of Smokovec would be similar to the lower section of Tatranská Lomnica = mainly easy blue pistes = a small ski resort that would not attract enough clients

Example of Zermatt, Switzerland

“It is not easy for us because Italy is much cheaper than us thanks to Euro and Zermatt is losing clients due to the connection. On the other hand, a wider choice of activities for clients is a big benefit and we can follow with a much better offer of services. Cooperation between the operators of cableways and both villages is crucial and has clear rules.”

“We have prepared plans how to interconnect both resorts even better. The truth is that this intention is not accepted so well by all people. However, it is indisputable that we need new projects in order to keep the region attractive also in future.”

Mayor of Zermatt, Romy Biner-Hauser for What kind of Tatras do we want

Benefits of the interconnection between Smokovce and Tatranská Lomnica

- creating a unique medium-size ski resort, much different from others
- more reasons to stay in the Tatras for a longer time all year round
- lower traffic load in both resorts

Benefits of a cableway between Hrebienok and Skalnaté Pleso / Štart

- lower migration of clients between resorts by non-ecological means of transport = lower ecological load
- lower use of vehicles = lower demands for parking spaces in resorts
- trouble-free movement of clients between resorts = increased attractiveness of Smokovce as an accommodation destination and development of services
- a service attractive all year round, transport also for visitors who come to the Tatras to relax, seniors and families with children

Conclusion

- These days, we are making field studies and analyses of the transport situation and other benefits of the project.
- We are considering several routes and technological solutions, we have had a study made in order to check potential benefits of the project for the overall transport situation.
- The public will be informed about the results and final suggestions so that a constructive discussion can be held about the project.

Suggestions for solving transport issues

– prerequisite for further development
of tourism in the Tatras

Press conference, 27/07/2017